

La emergencia de la nueva China, 1949-2024



© 2024 CECAP
Centro de Estudios Culturales
Asia-Pacífico
www.asiaoriental.net/cecap

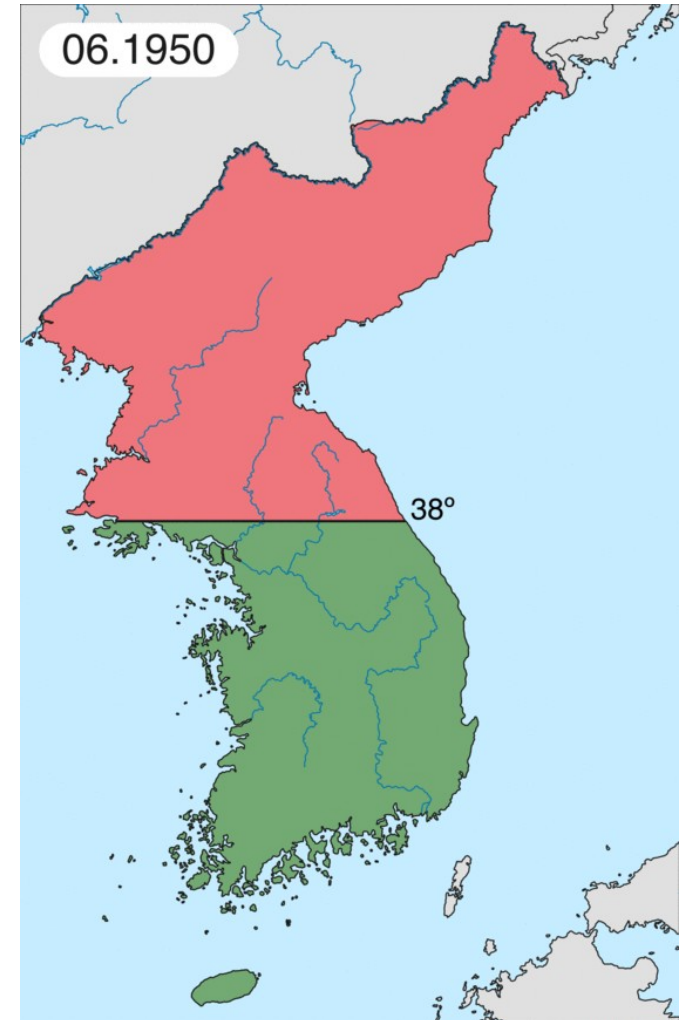
La era de Mao, 1949-1976



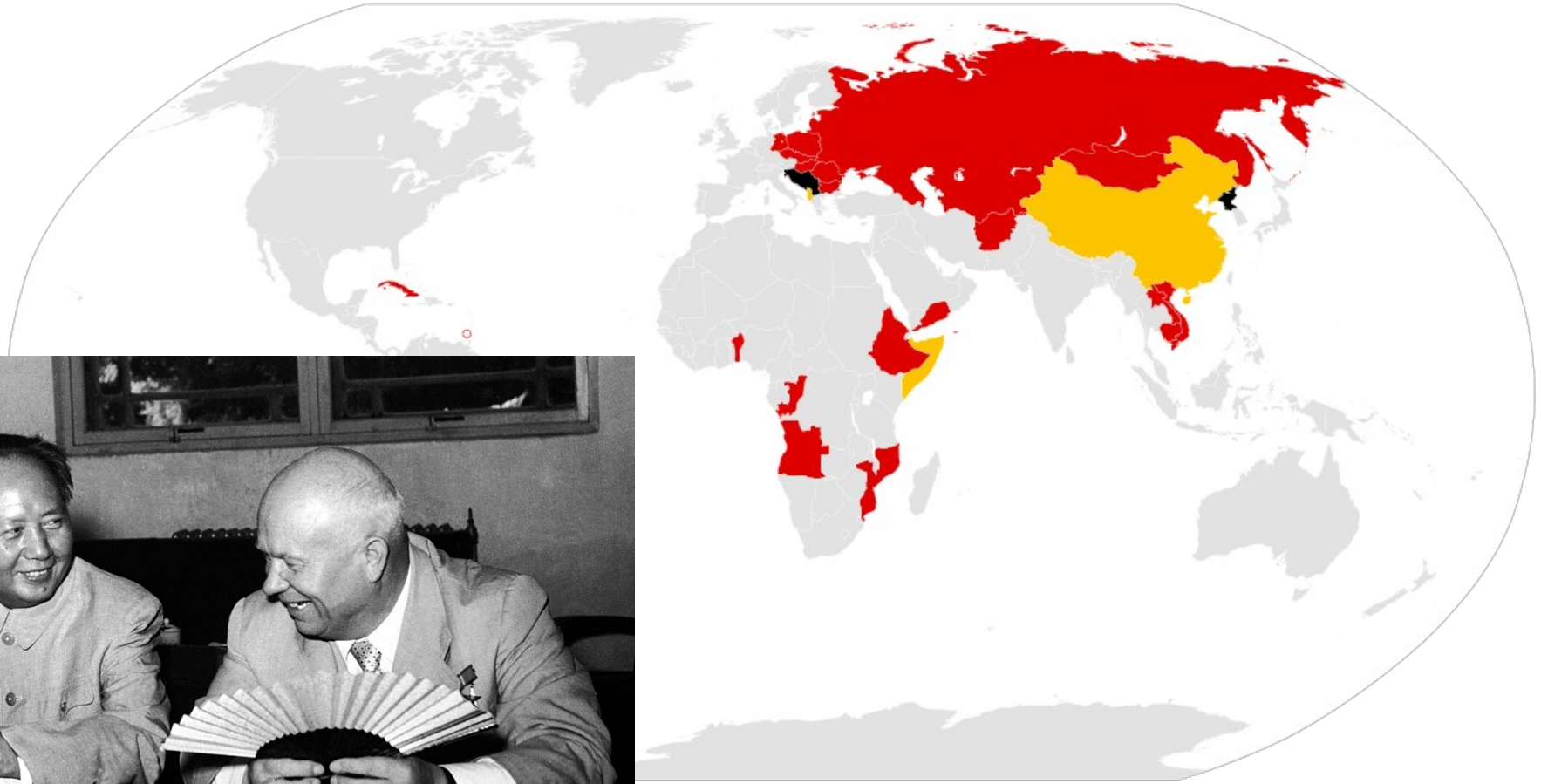
革命不是请客吃饭
«La revolución no es una cena»
Mao Zedong



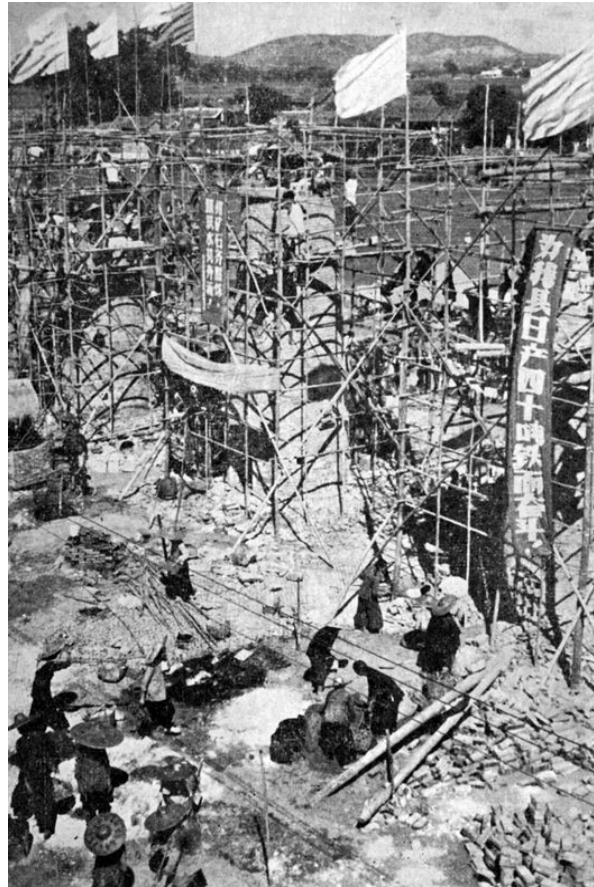
La era de Mao, 1949-1976



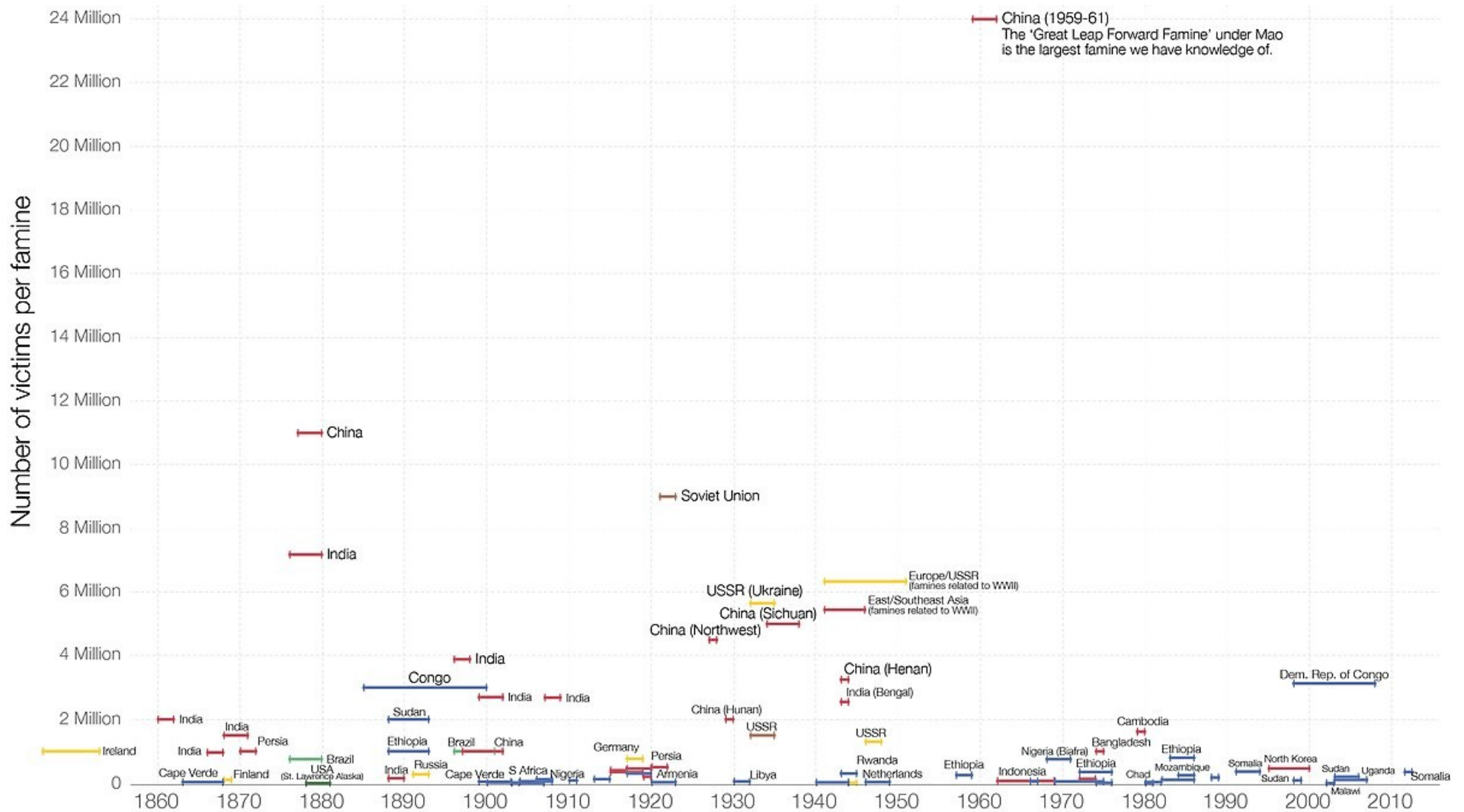
La era de Mao, 1949-1976



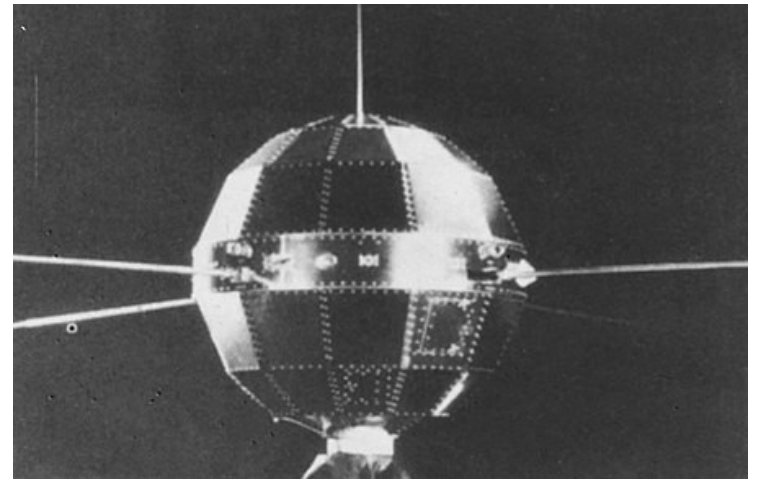
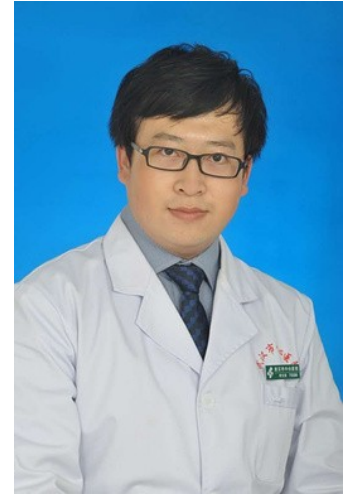
La era de Mao, 1949-1976



La era de Mao, 1949-1976



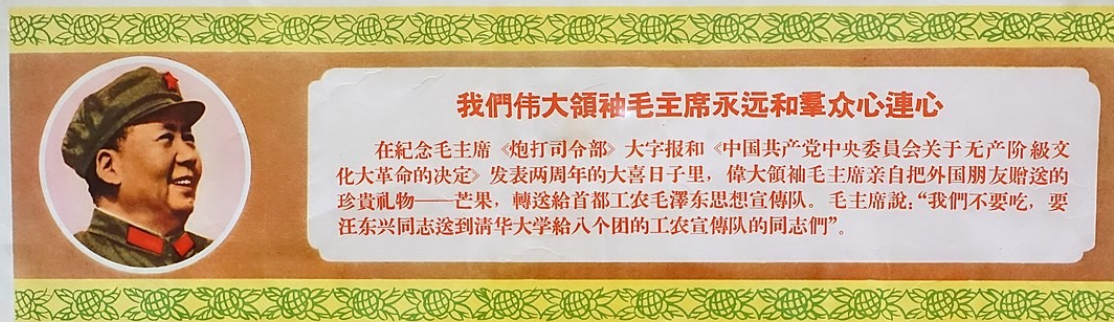
La era de Mao, 1949-1976



La era de Mao, 1949-1976



La era de Mao, 1949-1976



伟大領袖毛主席亲自贈送給首都工农毛澤东思想宣傳队的珍貴礼物——芒果

La era de Deng Xiaoping, 1976-1989



一国两制

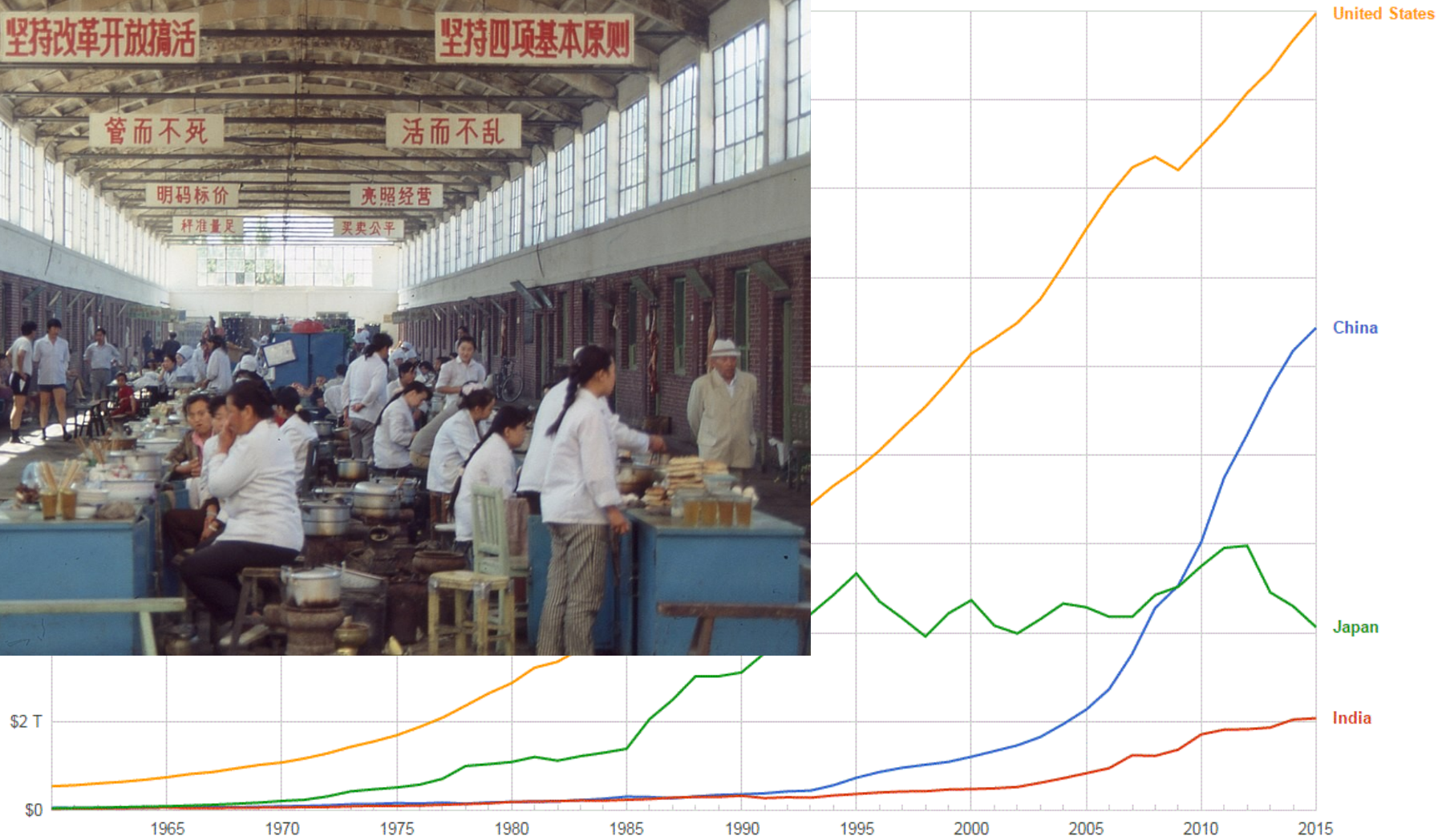
«Un país, dos sistemas»

中国特色社会主义

«Socialismo con características chinas»



La era de Deng Xiaoping, 1976-1989



La era de Deng Xiaoping, 1976-1989

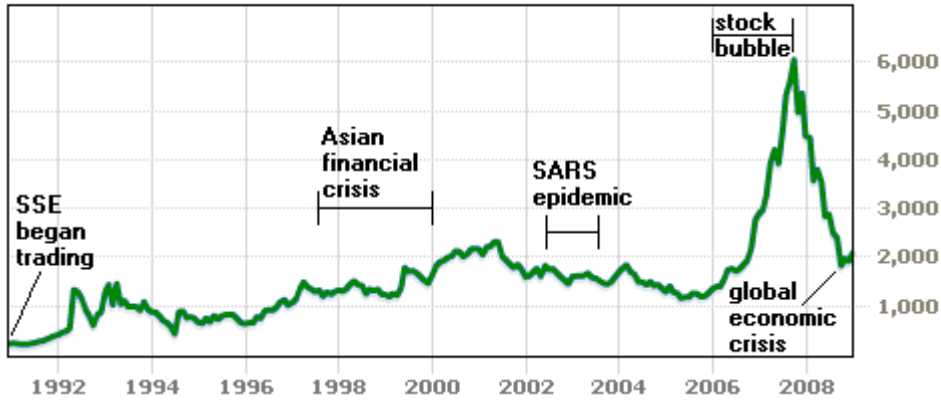


六四事件 《Incidente del 4J》

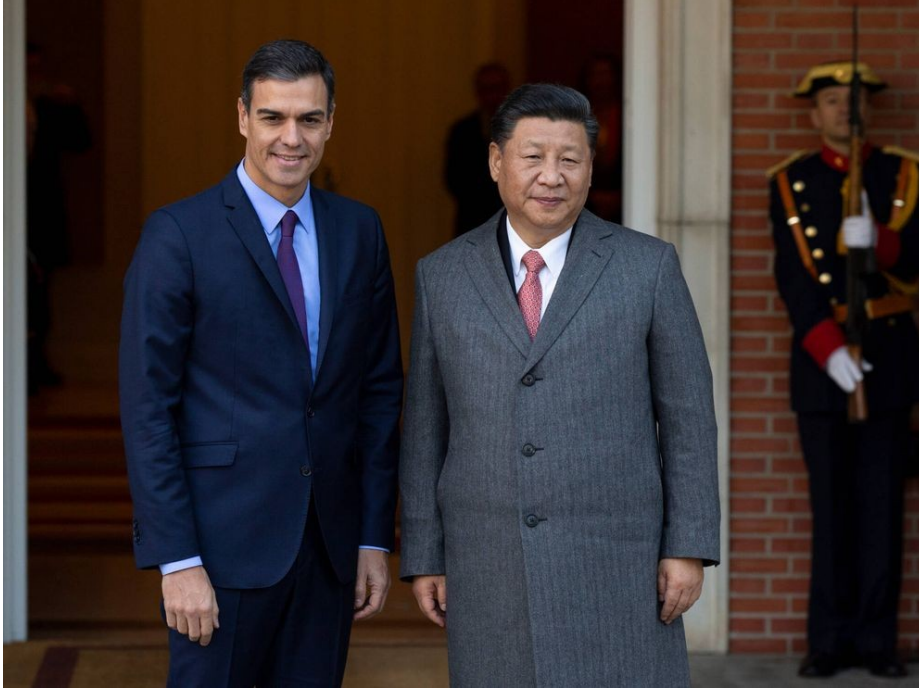
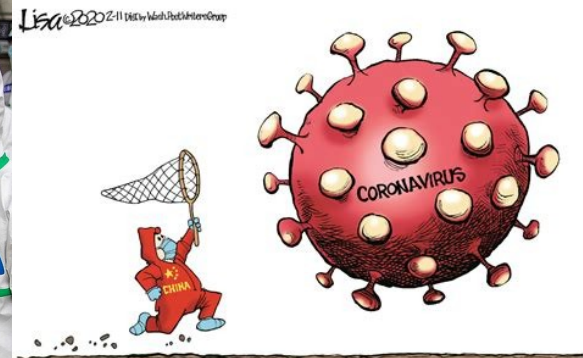


Las eras de Jiang Zemin y Hu Jintao, 1989-2012

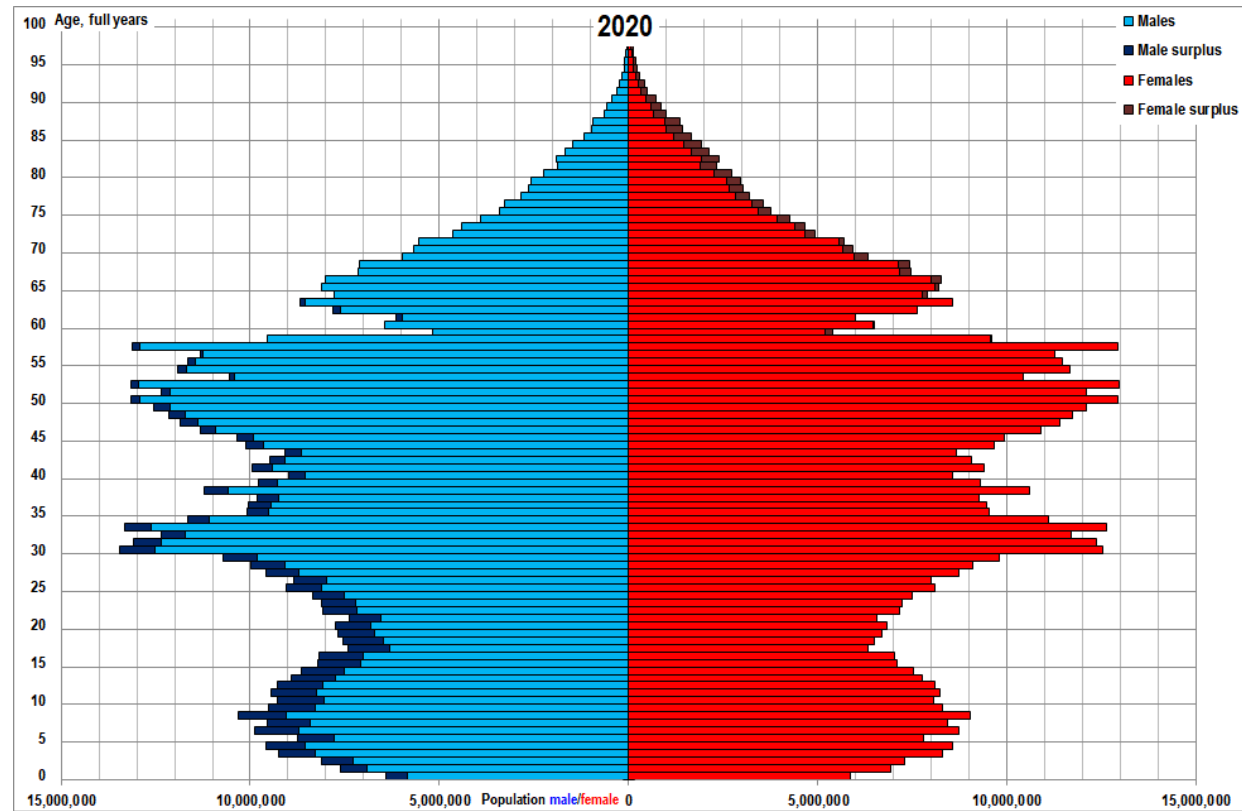
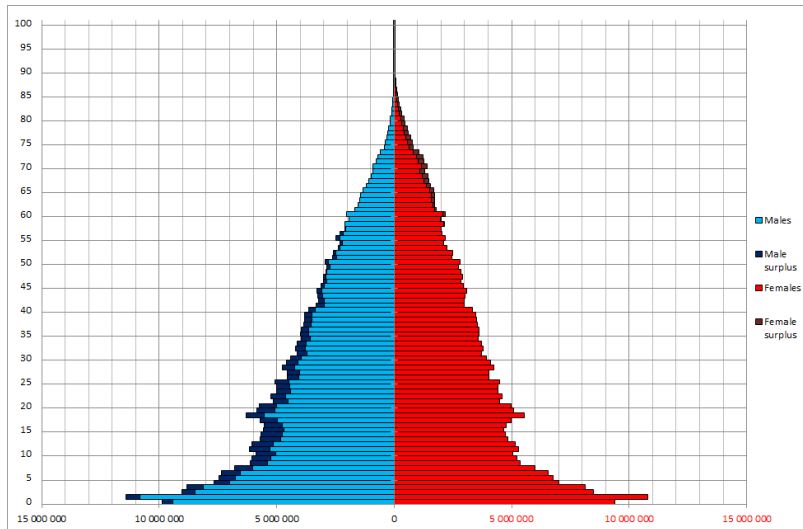
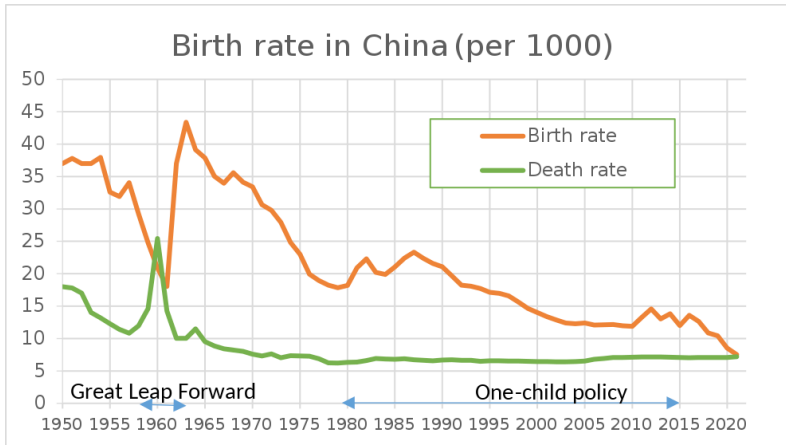
Shanghai (SSE) Composite Index: Chart



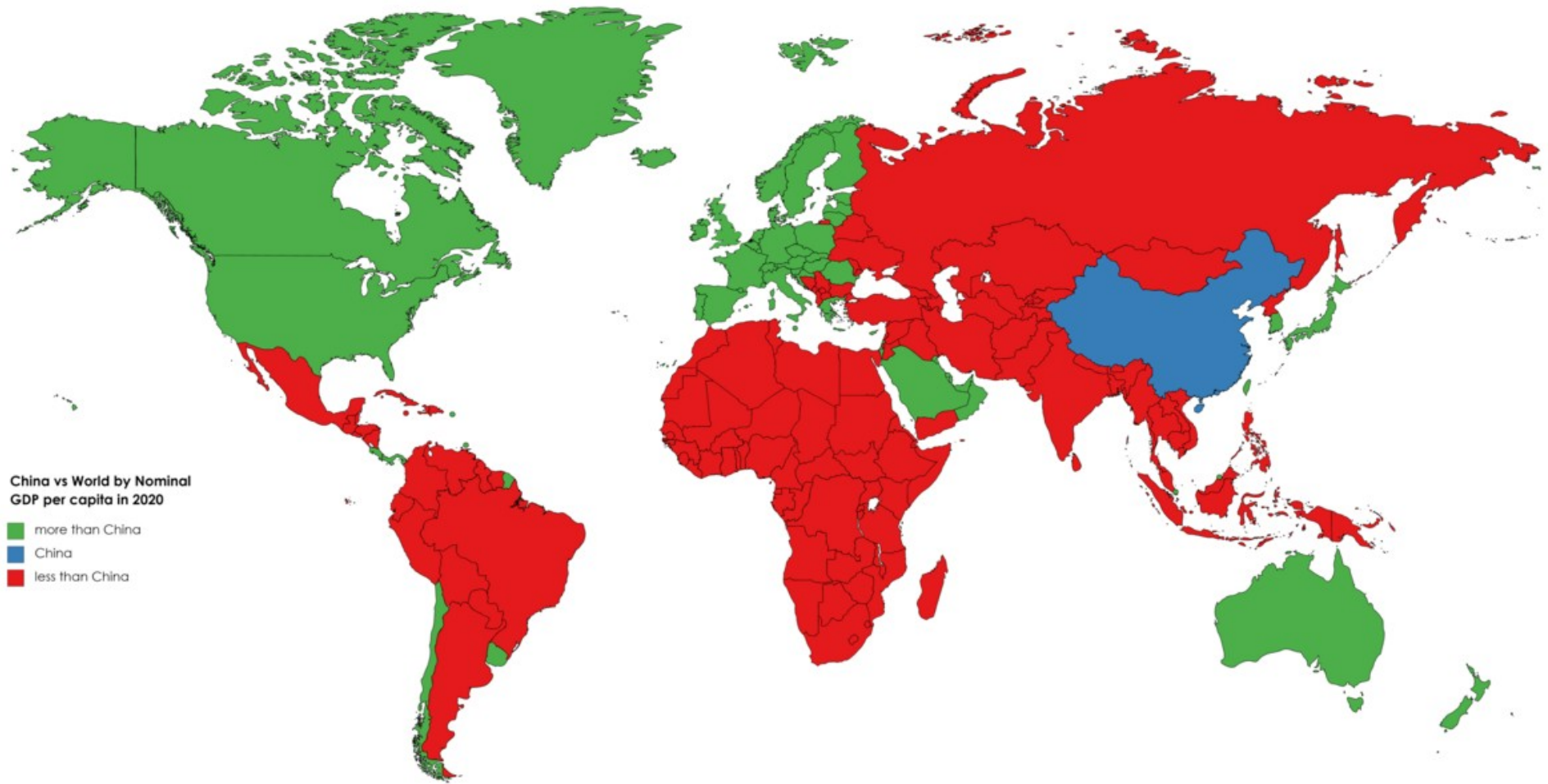
La era de Xi Jinping, 2012-



La era de Xi Jinping, 2012-



La era de Xi Jinping, 2012-



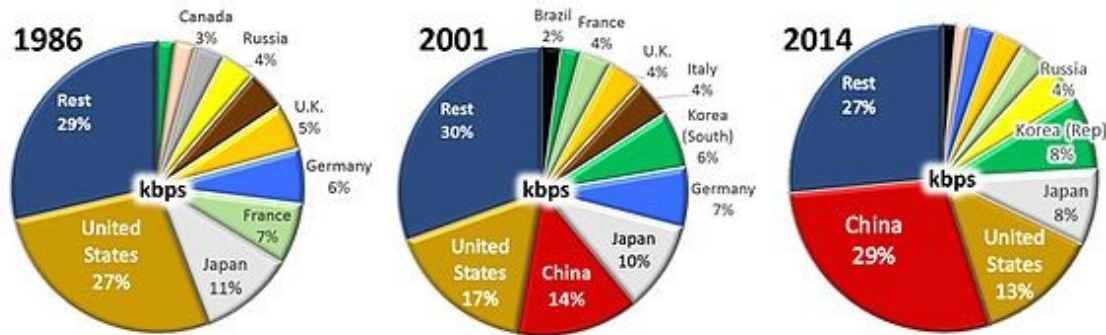
China vs World by Nominal GDP per capita in 2020

- more than China
- China
- less than China

Created with mapchart.net

La era de Xi Jinping, 2012-

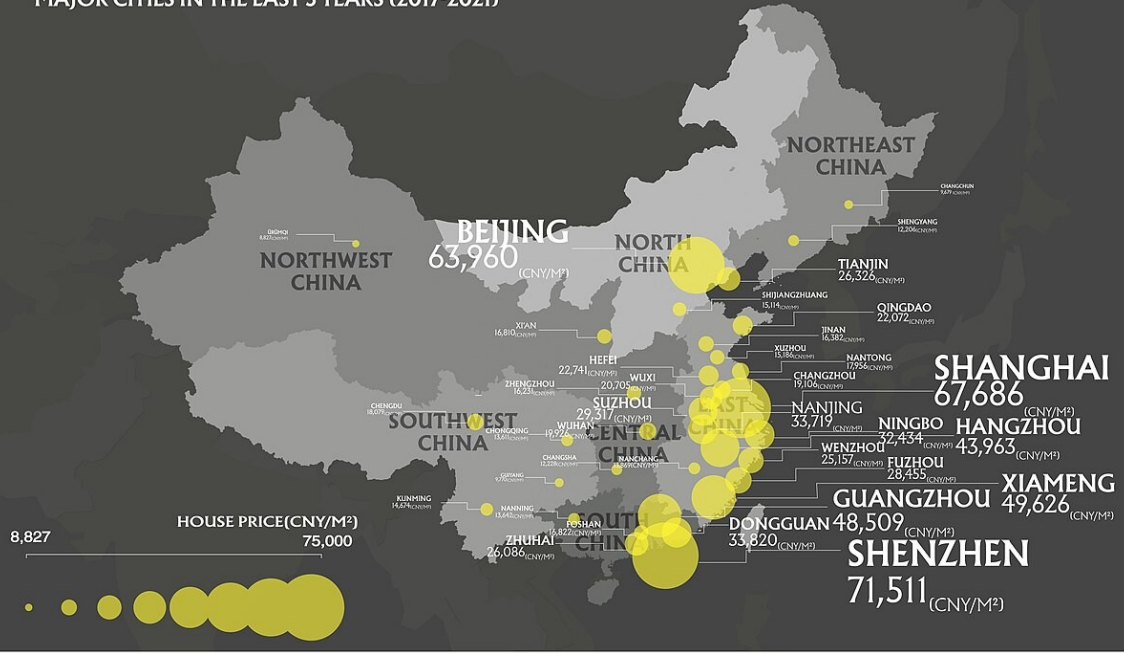
Top 10 countries with most installed bandwidth (in kbps)



La era de Xi Jinping, 2012-

HOUSE PRICES IN CHINA

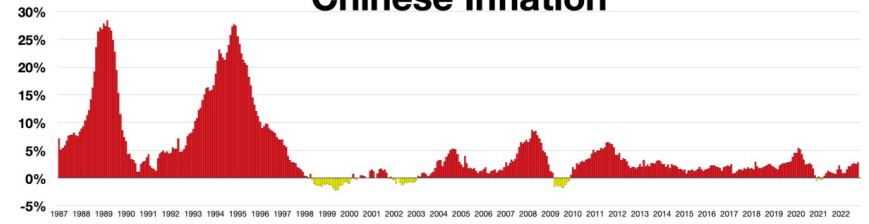
MAJOR CITIES IN THE LAST 5 YEARS (2017-2021)



SOURCE BY: CHINA REAL ESTATE DATA ACADEMY @HTTP://WWW.ZFSJ.ORG/SHOWNEW.ASP?ID=3318



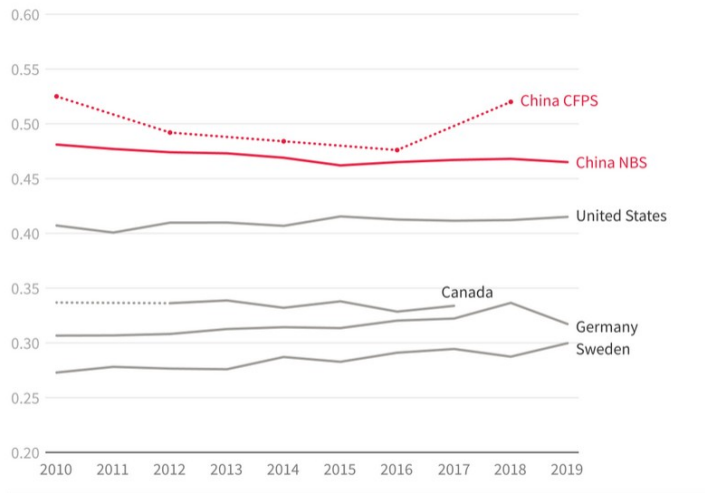
Chinese Inflation



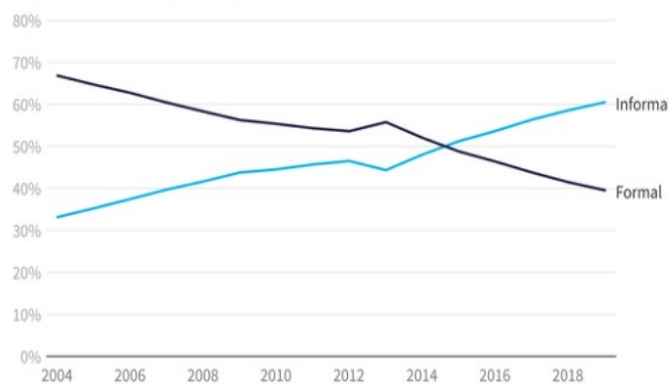
Shenzhen Alicante
 9.216 € / m² 1.959 € / m²
 304 € (mes) 1.323 € (mes)
 1 € = 7,76 ¥ (Febrero 2024)



La era de Xi Jinping, 2012-

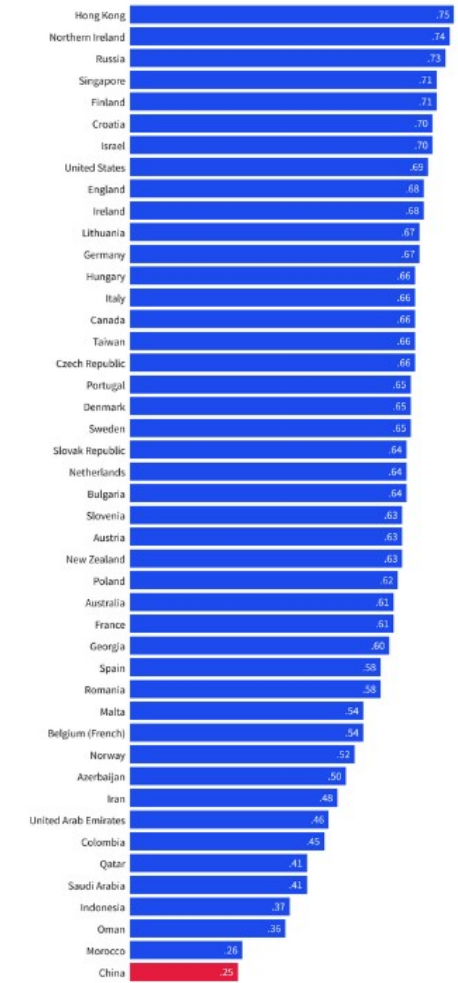


Employed individuals, millions, 2004–2019



Reading Tests Scores of Students in Rural China Are Low by Global Standards

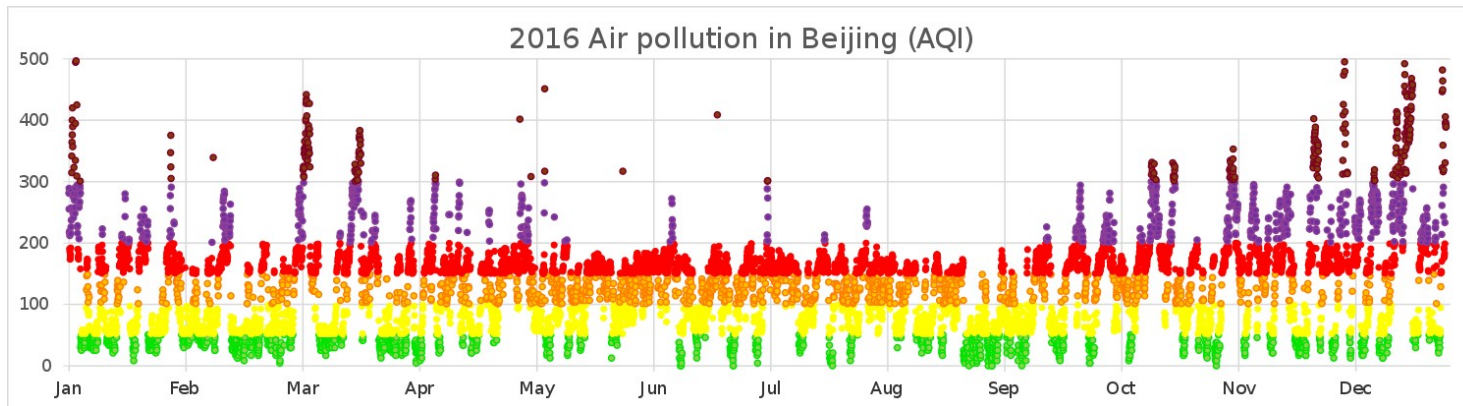
Standardized reading test scores



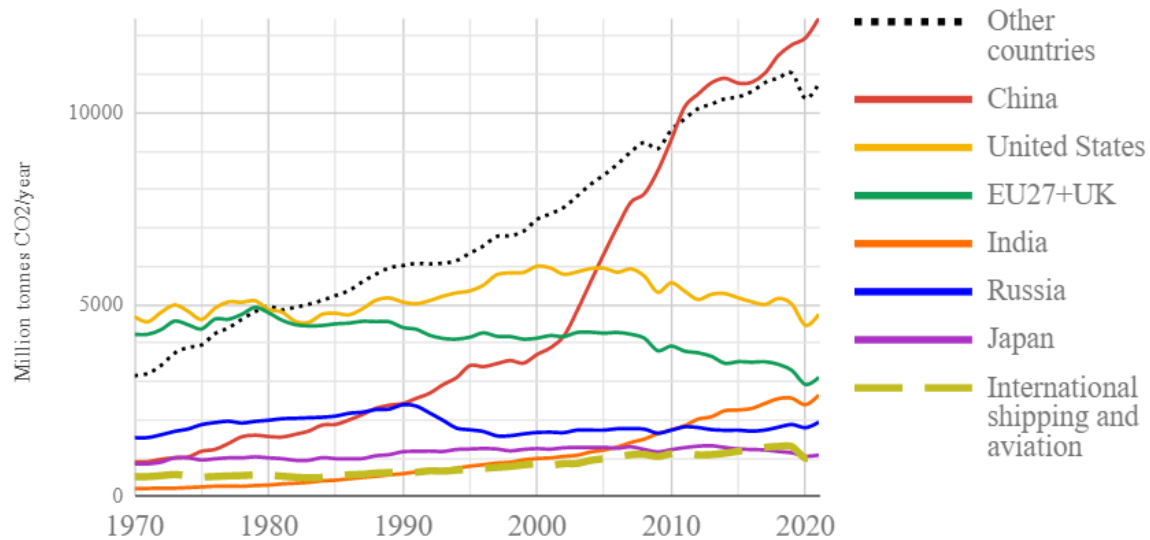
Income Quintiles Show Inequality in China is High but Stable

	Lowest 20% Households	Second 20% Households	Third 20% Households	Fourth 20% Households	Highest 20% Households
2013	4.3%	9.5%	15.5%	24.0%	46.7%
2015	4.3%	9.9%	16.0%	24.4%	45.3%
2017	4.2%	9.8%	15.9%	24.4%	45.8%
2019	4.5%	9.6%	15.3%	23.9%	46.6%
2021	4.5%	9.9%	15.6%	24.1%	46.0%

La era de Xi Jinping, 2012-

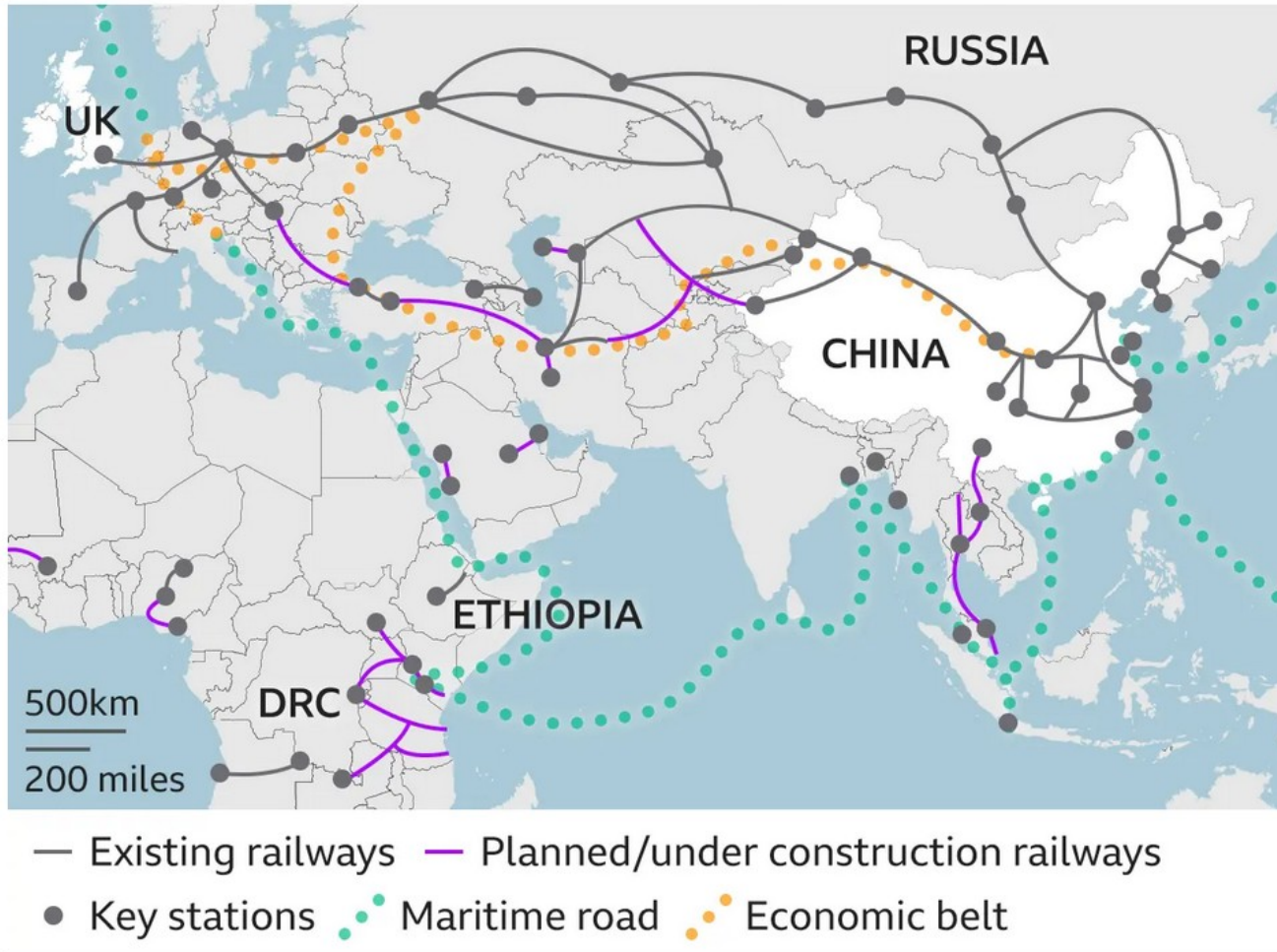


World fossil carbon dioxide emission 1970-2021



La era de Xi Jinping, 2012-

Belt and Road Initiative expansion plans



Asian Infrastructure Investment Bank

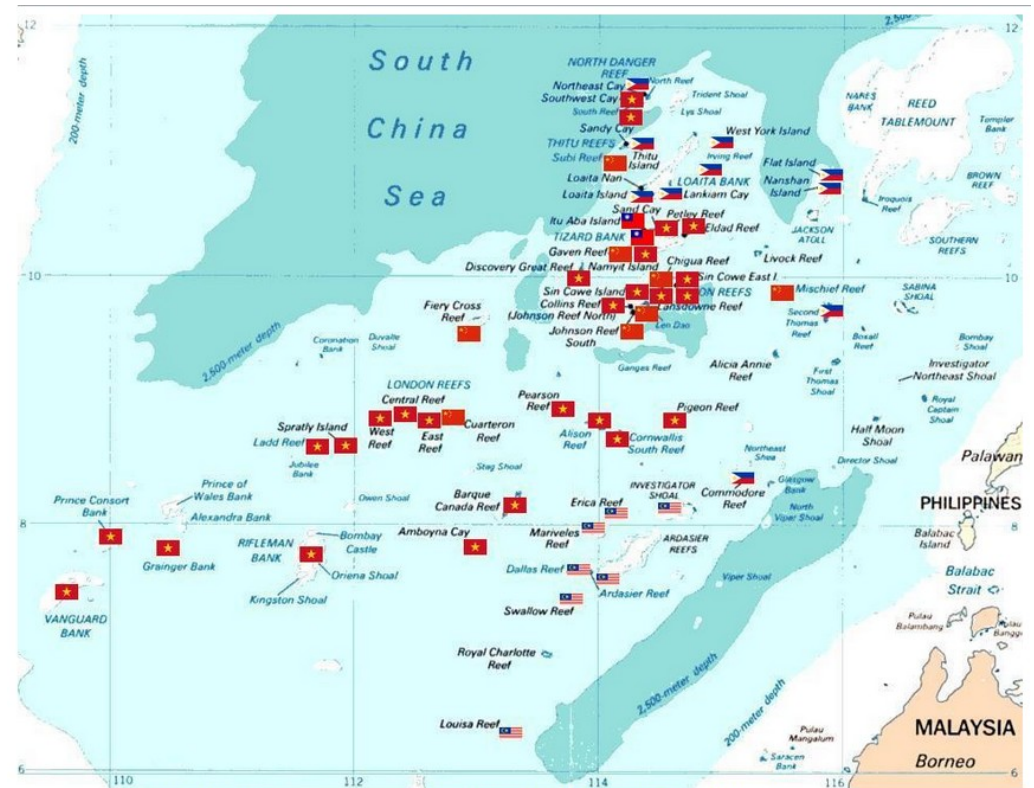


La era de Xi Jinping, 2012-



蚕食

«Mordisquear como un gusano de seda»

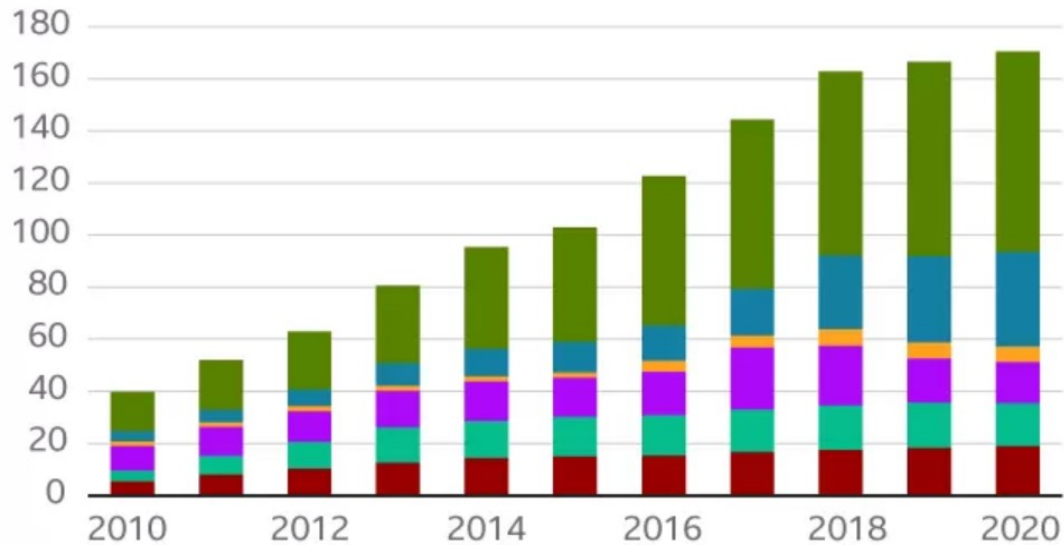


Size of this preview: 730 x 500 pixels. Other resolutions: 312 x 214 pixels | 633 x 450 pixels | 663 x 471 pixels

La era de Xi Jinping, 2012-

Low and middle-income countries' debt to China, billions of US dollars

- East Asia and Pacific
 - Europe and Central Asia
 - Latin America and Caribbean
- Middle East and North Africa
 - South Asia
 - Sub-Saharan Africa



Hambantota port was funded by Chinese money



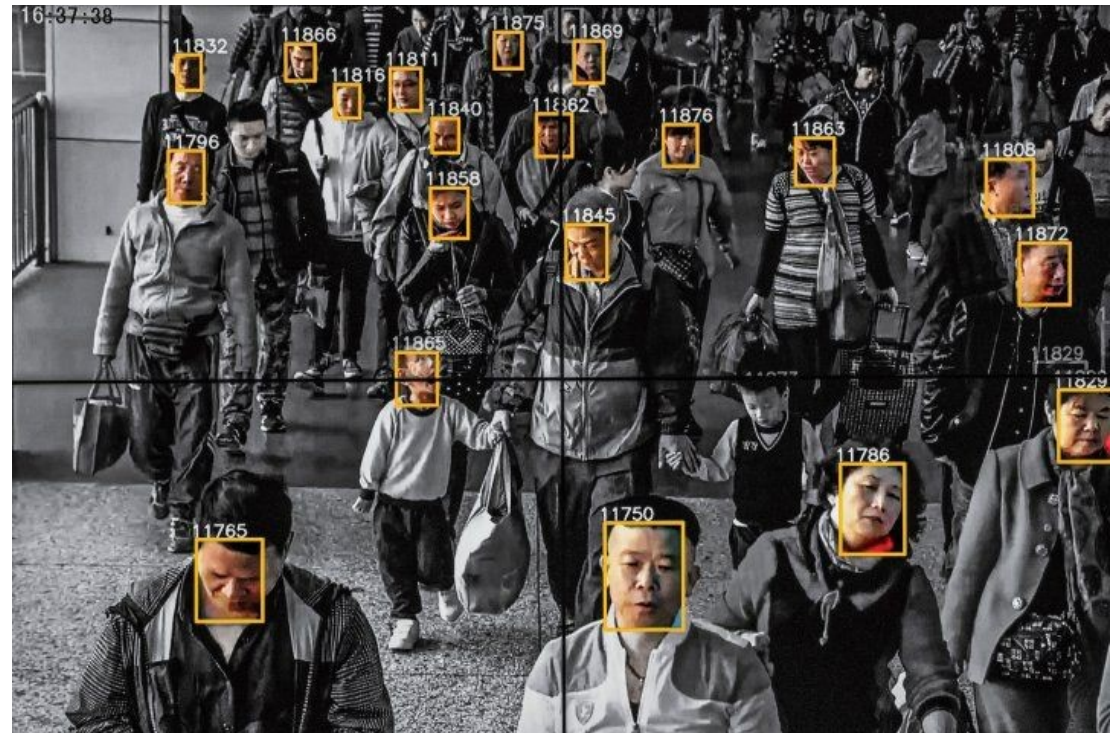
It Doesn't Matter if Ecuador Can Afford This Dam. China Still Gets Paid.

La era de Xi Jinping, 2012-

El Confidencial

Por qué es inquietante que China tenga 'comisarías secretas' en países como España

A raíz de la política 'cero covid', este fenómeno se ha agravado a través de prácticas como la detención sin toma de declaraciones ni proceso judicial, el sistema de cárceles secretas, y supuestas "clases de estudio"



La era de Xi Jinping, 2012-



AliExpress



JOHN KIM

